

# JAY•LOR®

---

***Cutter • Mixer • Feeder***

07 / 21 – DRIVELINE

---

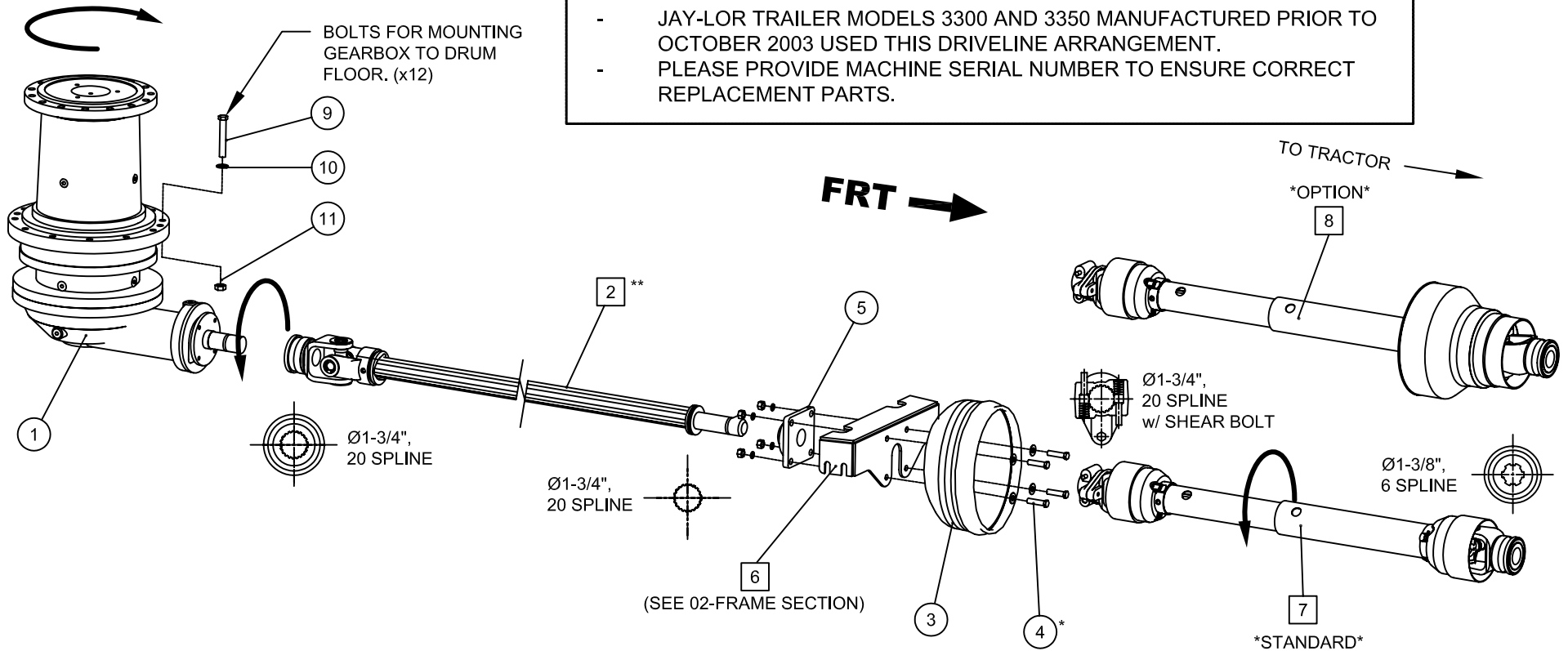
*"Putting the 'Total' into TMR"*

JAY-LOR® Fabricating Inc.  
RR # 2 Orton, Ontario, Canada, L0N 1N0 Tel: (519) 787-8058 Fax: (519) 787-7053

*To Print this Section, Click Here*

**SPECIAL NOTE:**

- JAY-LOR TRAILER MODELS 3300 AND 3350 MANUFACTURED PRIOR TO OCTOBER 2003 USED THIS DRIVELINE ARRANGEMENT.
- PLEASE PROVIDE MACHINE SERIAL NUMBER TO ENSURE CORRECT REPLACEMENT PARTS.



**NOTES:**

- \* - MOUNTING HARDWARE CONSISTS OF (4) Ø1/2" X 2" BOLTS, (4) 1/2" NUTS, (4) 1/2" FLATWASHERS, AND (4) 1/2" LOCKWASHERS.
- \*\* - REPLACEMENT DRIVESHAFT REQUIRES WELDING TO LOCK DRIVESHAFT TO MAINTAIN PROPER LENGTH.
- ASSEMBLY #070-25-51 (ITEM 8) OPTION EXTRA, DELETES ASSEMBLY #070-80-01 (ITEM 7).
- PLEASE PROVIDE MACHINE SERIAL NUMBER TO ENSURE CORRECT REPLACEMENT PARTS.

- ⊖ (#) - DENOTES INDIVIDUAL PART
- ⊖ (#) - DENOTES ASSEMBLY/SUB-ASSEMBLY

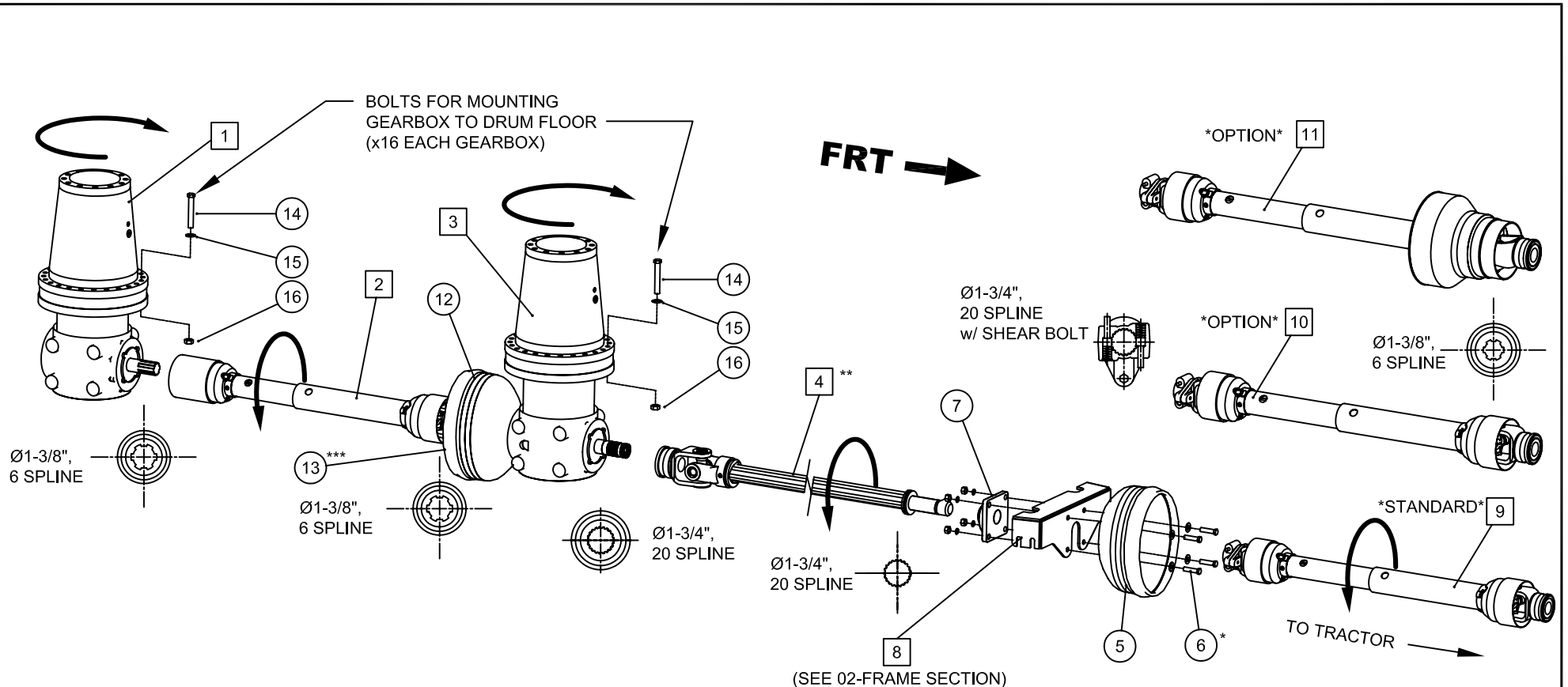
NO.	PART DESC.	QTY	PART NO.
11	Ø5/8" NUT	12	
10	Ø5/8" FLATWASHER	12	
9	Ø5/8"x4" GRD 5 BOLT	12	
8	#8 CV PTO SHAFT *OPTION*	1	210-06-03
7	#6 STANDARD PTO SHAFT	1	070-80-01
6	FRONT CROSSMEMBER	1	020-20-46
5	FLANGE BEARING - 1-3/4" UCF-20928	1	070-00-01
4	MOUNTING HARDWARE *	1	
3	PTO SAFETY SHIELD	1	070-00-88
2	#8 UNIVERSAL LENGTH DRIVESHAFT**	1	210-06-50
1	PG 1602 VM BTI GEARBOX W/ CD 450	1	070-20-01
NO. PART DESC.		QTY	PART NO.

**PARTS LIST**

MODEL:		3425 & 3575 TRAILERS	
DATE:	MAR 22/04	SHEET	1 of 1
PART/ASSEMBLY NO:		070-90-00	



TITLE: STANDARD DRIVELINE ASSEMBLY (540 RPM) FOR MODELS 3425 & 3575



**NOTES:**

- \* - MOUNTING HARDWARE CONSISTS OF (4) Ø1/2" X 2" BOLTS, (4) 1/2" NUTS, (4) 1/2" FLATWASHERS, AND (4) 1/2" LOCKWASHERS.
  - \*\* - REPLACEMENT DRIVESHAFT REQUIRES WELDING TO LOCK DRIVESHAFT TO MAINTAIN PROPER LENGTH.
  - \*\*\* - MOUNTING HARDWARE CONSISTS OF (4) M8 X 16 BOLTS AND (4) 3/8" FLATWASHERS.
- ASSEMBLY #210-05-53 (ITEM 10) OR #070-25-51 (ITEM 11) OPTION EXTRA, DELETES ASSEMBLY #070-80-01 (ITEM 9).
- PLEASE PROVIDE MACHINE SERIAL NUMBER TO ENSURE CORRECT REPLACEMENT PARTS.

⊖ - DENOTES INDIVIDUAL PART  
 ⊞ - DENOTES ASSEMBLY/SUB-ASSEMBLY

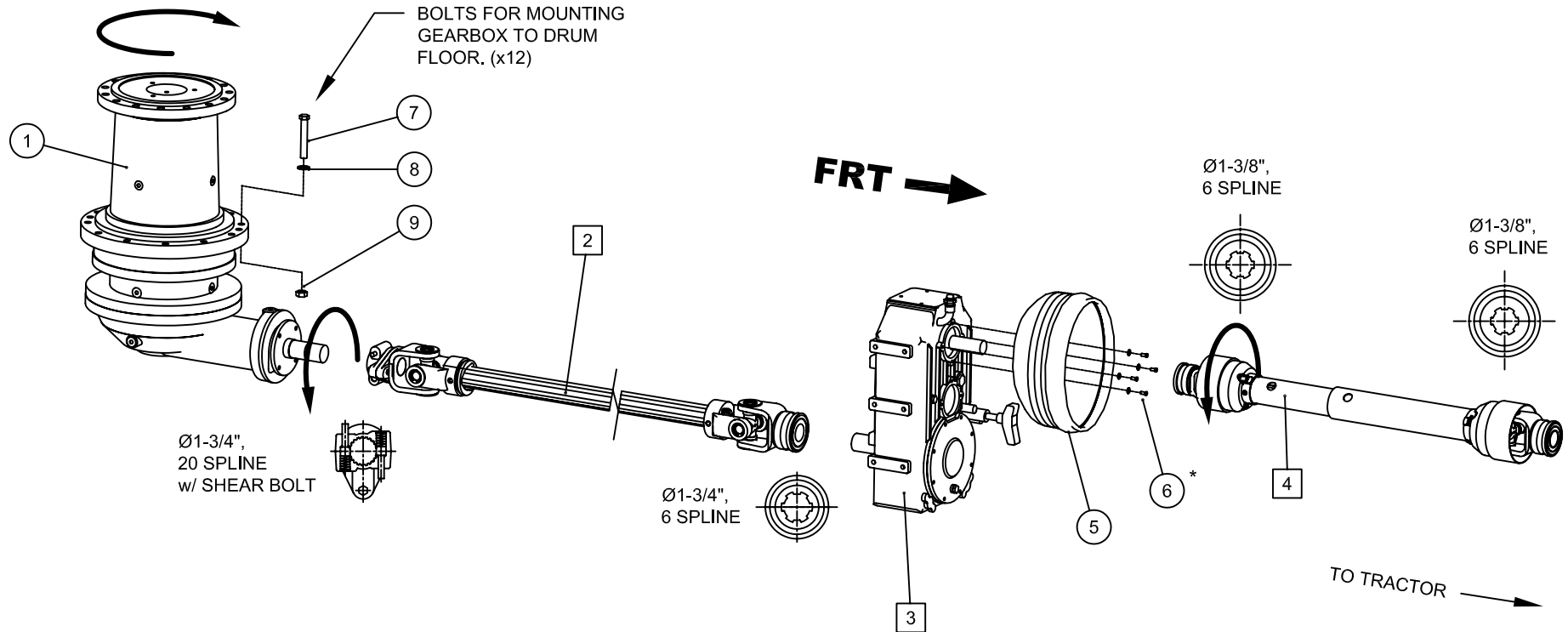
16	Ø1/2" NUT	32	
15	Ø1/2" FLATWASHER	32	
14	Ø1/2" x 5-1/2" BOLT	32	
13	MOUNTING HARDWARE***	1	
12	PTO SAFETY SHIELD (INTERMEDIATE)	1	070-00-89
11	#8 CV PTO SHAFT *OPTION*	1	210-06-03
10	#8 STANDARD PTO SHAFT *OPTION*	1	210-05-53
9	#6 STANDARD PTO SHAFT	1	070-80-01
8	FRONT CROSSMEMBER	1	020-20-46
7	FLANGE BEARING - 1-3/4" UCF-20928	1	070-00-01
6	MOUNTING HARDWARE*	1	
5	PTO SAFETY SHIELD	1	070-00-88
4	#8 UNIVERSAL LENGTH DRIVESHAFT**	1	210-06-50
3	PGA 1002 VM BTI GEARBOX (FRONT)	1	070-28-01
2	# 6 DRIVESHAFT ASSEMBLY w/ SHIELD	1	210-06-61
1	PGA 1002 VM BTI GEARBOX (REAR)	1	070-27-01
NO.	PART DESC.	QTY	PART NO.

**PARTS LIST**

MODEL:	3650 TRAILER	
DATE:	MAR 22/04	SHEET 1 of 1
PART/ASSEMBLY NO:	070-90-01	



TITLE: STANDARD DRIVELINE ASSEMBLY (540 RPM) FOR MODEL 3650.



**NOTES:**

- \* - MOUNTING HARDWARE CONSISTS OF (4) M8x16 BOLTS AND (4) 3/8" FLATWASHERS.
- SEE '02 - FRAME' SECTION FOR 2-SPEED MOUNTING.
- PLEASE PROVIDE MACHINE SERIAL NUMBER TO ENSURE CORRECT REPLACEMENT PARTS.

⊖# - DENOTES INDIVIDUAL PART  
 ⊖# - DENOTES ASSEMBLY/SUB-ASSEMBLY

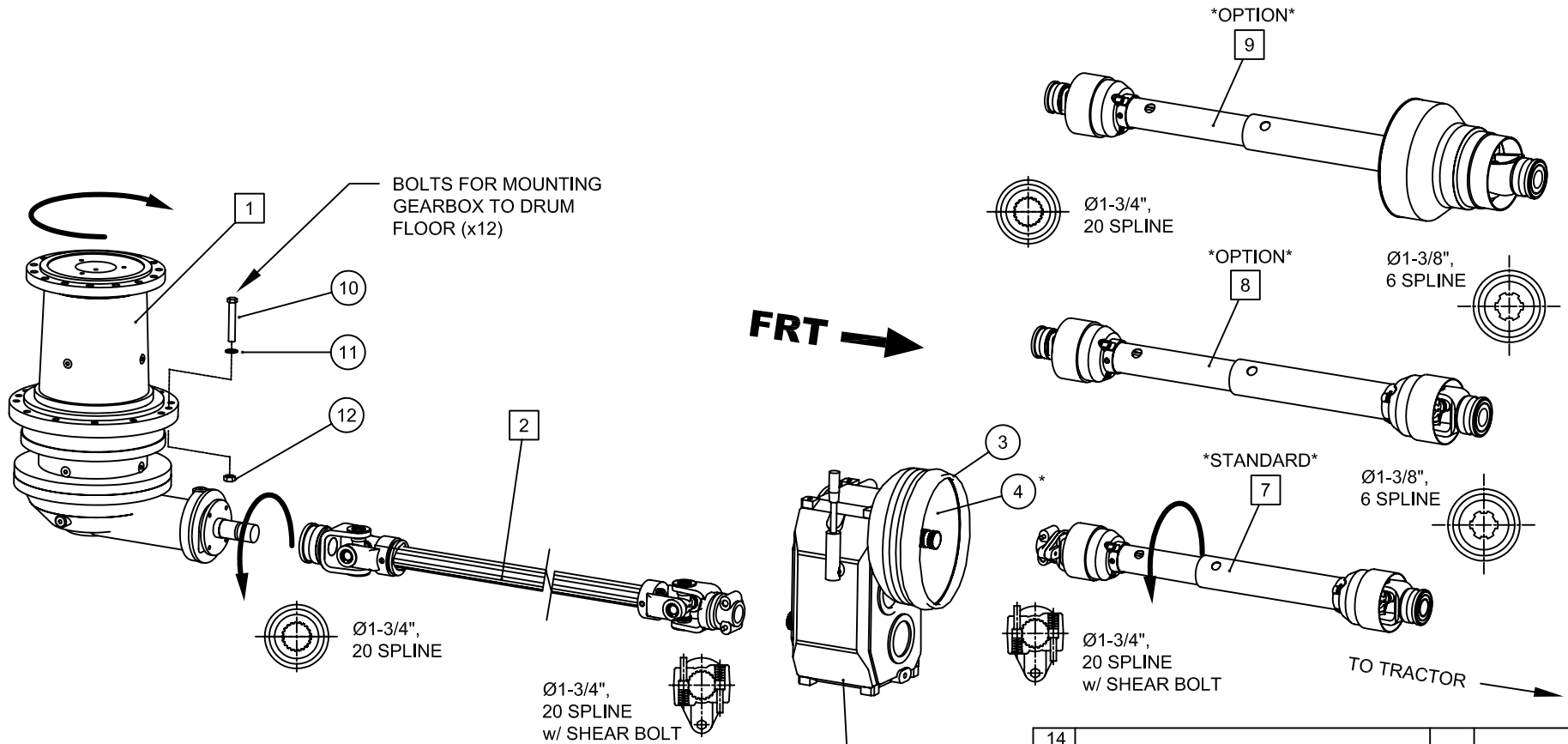
9	Ø5/8" NUT	12	
8	Ø5/8" FLATWASHER	12	
7	Ø5/8"x4" GRD 5 BOLT	12	
6	MOUNTING HARDWARE *	1	
5	PTO SAFETY SHIELD	1	070-00-88
4	#6 STANDARD PTO SHAFT	1	070-80-20
3	D732A 2-SPEED TRANSMISSION	1	070-40-01
2	#8 UNIVERSAL LENGTH DRIVESHAFT	1	210-06-52
1	PG 1602 VM BTI GEARBOX W/ CD 450	1	070-20-01
NO.	PART DESC.	QTY	PART NO.

**PARTS LIST**

MODEL:	3425 TRAILERS	
DATE:	JUNE 10, 2003	SHEET 1 of 1
PART/ASSEMBLY NO:	070-90-02	

**JAY-LOR**

TITLE: DRIVELINE ASSEMBLY (540 RPM) FOR MODELS 3425 EQUIPPED W/ D732A 2-SPEED TRANSMISSION



**NOTES:**

- \* - MOUNTING HARDWARE CONSISTS OF (4) M8 X 16 BOLTS AND (4) 3/8" FLATWASHERS.
- ASSEMBLY #210-05-50 (ITEM 8) OR #070-24-01 (ITEM 9) OPTION EXTRA, DELETES ASSEMBLY #070-80-01 (ITEM 7).
- PLEASE PROVIDE MACHINE SERIAL NUMBER TO ENSURE CORRECT REPLACEMENT PARTS.

- ⊖ - DENOTES INDIVIDUAL PART
- ⊕ - DENOTES ASSEMBLY/SUB-ASSEMBLY

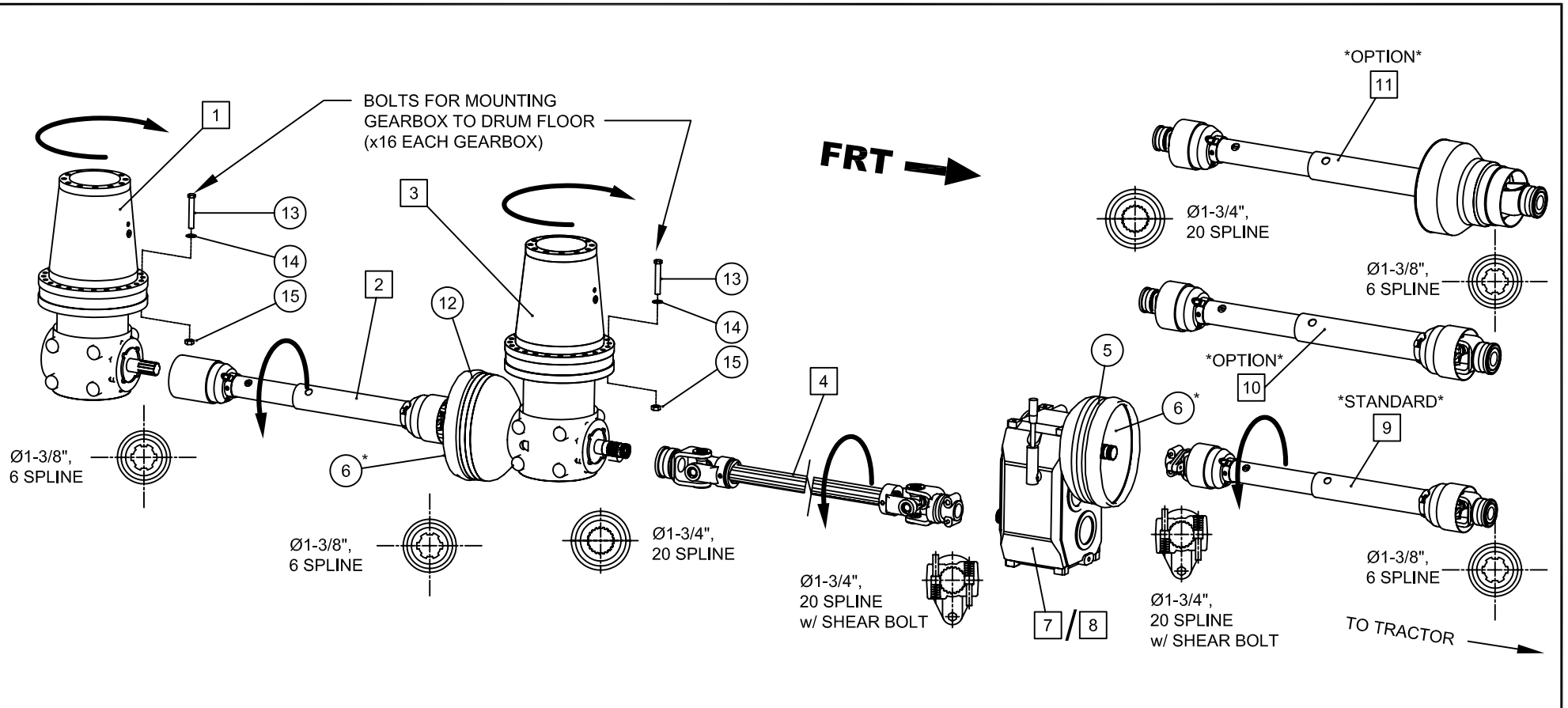
14			
13			
12	Ø5/8" NUT	12	
11	Ø5/8" FLATWASHER	12	
10	Ø5/8" x 4" GRD 5 BOLT	12	
9	#8 CV PTO SHAFT *OPTION*	1	210-06-00
8	#8 STANDARD PTO SHAFT *OPTION*	1	210-05-50
7	#6 STANDARD PTO SHAFT	1	070-80-01
6	AP502 2-SPEED TRANSMISSION	1	070-01-08
5	C3A 2-SPEED TRANSMISSION	1	070-45-01
4	MOUNTING HARDWARE*	1	
3	PTO SAFETY SHIELD	1	070-00-88
2	#8 DRIVESHAFT ASSEMBLY	1	210-06-51
1	PG 1602 VM BTI GEARBOX W/ CD 450	1	070-20-01
NO.	PART DESC.	QTY	PART NO.

**PARTS LIST**

MODEL:	3575 TRAILER	
DATE:	MAR 22/04	SHEET 1 of 1
PART/ASSEMBLY NO:	070-90-03	



TITLE: DRIVELINE ASSEMBLY (540 RPM) FOR MODEL 3575 EQUIPPED W/ C3A OR AP502 2-SPEED TRANSMISSION



**NOTES:**

- \* - MOUNTING HARDWARE CONSISTS OF (4) M8 X 16 BOLTS AND (4) 3/8" FLATWASHERS.
- ASSEMBLY #210-05-50 (ITEM 10) OR #070-24-01 (ITEM 11) OPTION EXTRA, DELETES ASSEMBLY #070-80-01 (ITEM 9).
- PLEASE PROVIDE MACHINE SERIAL NUMBER TO ENSURE CORRECT REPLACEMENT PARTS.

⊖ (#) - DENOTES INDIVIDUAL PART  
 ⊖ (#) - DENOTES ASSEMBLY/SUB-ASSEMBLY

15	Ø1/2" NUT	32	
14	Ø1/2" FLATWASHER	32	
13	Ø1/2" x 5-1/2" BOLT	32	
12	PTO SAFETY SHIELD (INTERMEDIATE)	1	070-00-89
11	#8 CV PTO SHAFT *OPTION*	1	210-06-00
10	#8 STANDARD PTO SHAFT *OPTION*	1	210-05-50
9	#6 STANDARD PTO SHAFT	1	070-80-01
8	AP502 2-SPEED TRANSMISSION	1	070-01-08
7	C3A 2-SPEED TRANSMISSION	1	070-45-01
6	MOUNTING HARDWARE*	1	
5	PTO SAFETY SHIELD	1	070-00-88
4	#8 DRIVESHAFT ASSEMBLY	1	210-06-51
3	PGA 1002 VM BTI GEARBOX (FRONT)	1	070-28-01
2	#6 DRIVESHAFT ASSEMBLY w/ SHIELD	1	210-06-61
1	PGA 1002 VM BTI GEARBOX (REAR)	1	070-27-01
NO.	PART DESC.	QTY	PART NO.

**PARTS LIST**

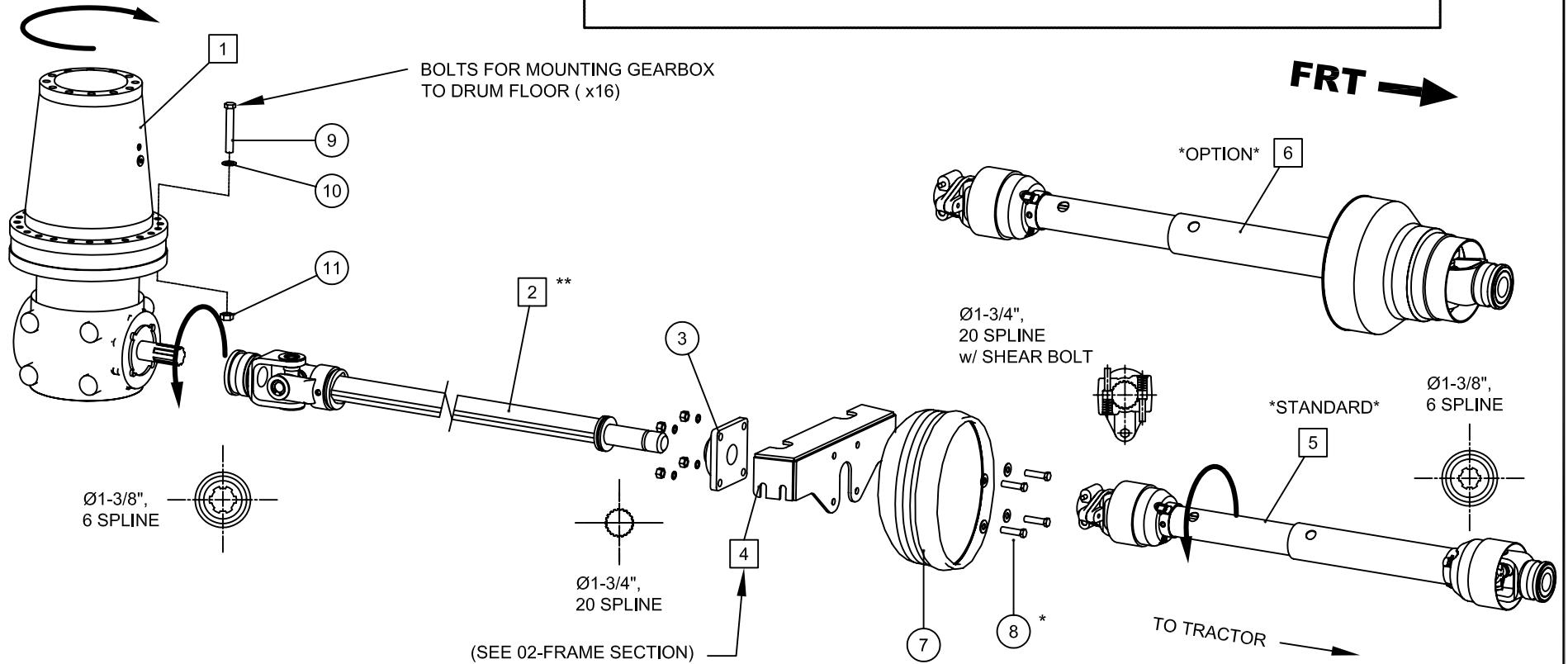
MODEL:		3650 TRAILER	
DATE:	MAR 22/04	SHEET	1 of 1
PART/ASSEMBLY NO:	070-90-04		



TITLE: DRIVELINE ASSEMBLY (540 RPM) FOR MODEL 3650 W/ C3A OR AP502 2-SPEED TRANSMISSION

**SPECIAL NOTE:**

- JAY-LOR TRAILER MODELS 3300 AND 3350 MANUFACTURED PRIOR TO OCTOBER 2003 USED DRIVELINE ARRANGEMENT SIMILAR TO 070-90-00.



**NOTES:**

- \* - MOUNTING HARDWARE CONSISTS OF (4) Ø1/2" X 2" BOLTS, (4) 1/2" NUTS, (4) 1/2" FLATWASHERS, AND (4) 1/2" LOCKWASHERS.
- \*\* - REPLACEMENT DRIVESHAFT REQUIRES WELDING TO LOCK DRIVESHAFT TO MAINTAIN PROPER LENGTH.
- ASSEMBLY #210-06-03 (ITEM 6) OPTION EXTRA, DELETES ASSEMBLY #070-80-01 (ITEM 5).
- PLEASE PROVIDE MACHINE SERIAL NUMBER TO ENSURE CORRECT REPLACEMENT PARTS.

- ⊖ - DENOTES INDIVIDUAL PART
- ⊞ - DENOTES ASSEMBLY/SUB-ASSEMBLY

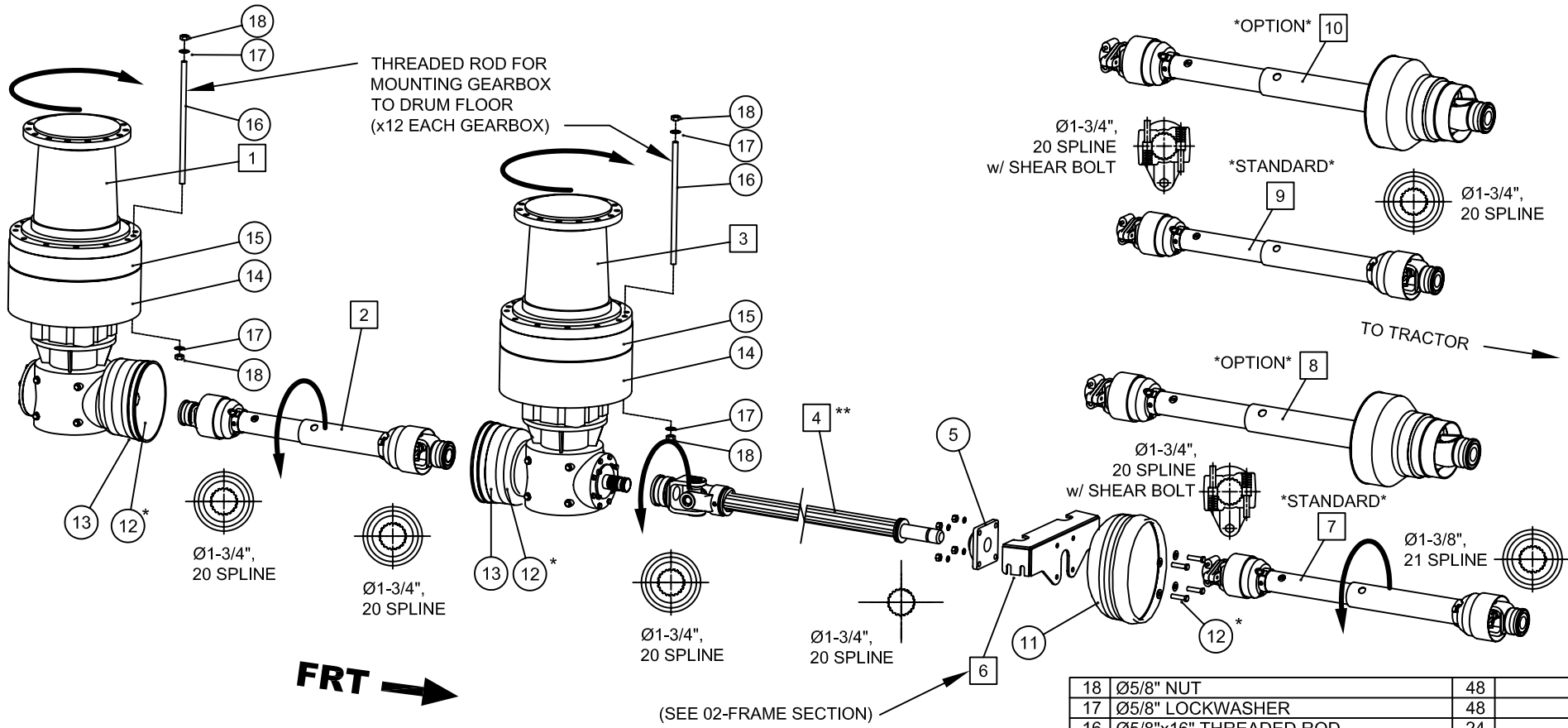
NO.	PART DESC.	QTY	PART NO.
11	Ø1/2" NUT	16	
10	Ø1/2" FLATWASHER	16	
9	Ø1/2" x 5-1/2" BOLT	16	
8	MOUNTING HARDWARE *	1	
7	PTO SAFETY SHIELD	1	070-00-88
6	#8 CV PTO SHAFT *OPTION*	1	210-06-03
5	#6 STANDARD PTO SHAFT	1	070-80-01
4	FRONT CROSSMEMBER	1	020-20-46
3	FLANGE BEARING	1	070-00-01
2	#8 UNIVERSAL DRIVESHAFT **	1	210-06-53
1	PGA 1002 VM BTI GEARBOX (REAR)	1	070-27-01
NO. PART DESC.			QTY PART NO.

**PARTS LIST**

MODEL: 3300 & 3350 TRAILERS	
DATE: JUNE 10, 2003	SHEET 1 of 1
PART/ASSEMBLY NO: 070-90-05	



TITLE: STANDARD DRIVELINE ASSEMBLY (540 RPM) FOR MODEL 3300 AND 3350.



**FRT** →

(SEE 02-FRAME SECTION)

**NOTES:**

- \* - PTO SHIELD MOUNTING HARDWARE CONSISTS OF (4) Ø1/2" X 2" BOLTS, (4) 1/2" NUTS, (4) 1/2" FLATWASHERS, AND (4) 1/2" LOCKWASHERS.
- \*\* - REPLACEMENT DRIVESHAFT REQUIRES WELDING TO LOCK DRIVESHAFT TO MAINTAIN PROPER LENGTH.
- ASSEMBLY #210-06-04 (ITEM 8) OR #210-06-05 (ITEM 10) OPTION EXTRA, DELETES ASSEMBLY #210-05-54 (ITEM 7) OR #070-22-06 (ITEM 9).
- PLEASE PROVIDE MACHINE SERIAL NUMBER TO ENSURE CORRECT REPLACEMENT PARTS.

18	Ø5/8" NUT	48	
17	Ø5/8" LOCKWASHER	48	
16	Ø5/8"x16" THREADED ROD	24	
15	SPACER RING (3")	2	019-00-51
14	SPACER RING (6")	2	019-00-50
13	PTO SAFETY SHIELD	2	070-00-89
12	MOUNTING HARDWARE *	3	
11	PTO SAFETY SHIELD	1	070-00-88
10	#8 CV PTO SHAFT *OPTION*	1	210-06-05
9	#8 STD. PTO SHAFT	1	070-22-06
8	#8 CV PTO SHAFT *OPTION*	1	210-06-04
7	#8 STD. PTO SHAFT	1	210-05-54
6	FRONT CROSSMEMBER	1	020-20-46
5	FLANGE BEARING	1	070-00-01
4	#8 UNIVERSAL DRIVESHAFT	1	210-06-50
3	PG1802 BTI w/ T-269 GEARBOX (FRONT)	1	070-60-01
2	# 8 DRIVESHAFT ASSEMBLY w/ SHIELD	1	210-06-60
1	PG1802 BTI w/ T-269 GEARBOX (REAR)	1	070-60-02
NO.	PART DESC.	QTY	PART NO.

- ⊖ - DENOTES INDIVIDUAL PART
- ⊞ - DENOTES ASSEMBLY/SUB-ASSEMBLY


TITLE: STANDARD DRIVELINE ASSEMBLY (1000 RPM) FOR MODEL 3750.

**PARTS LIST**

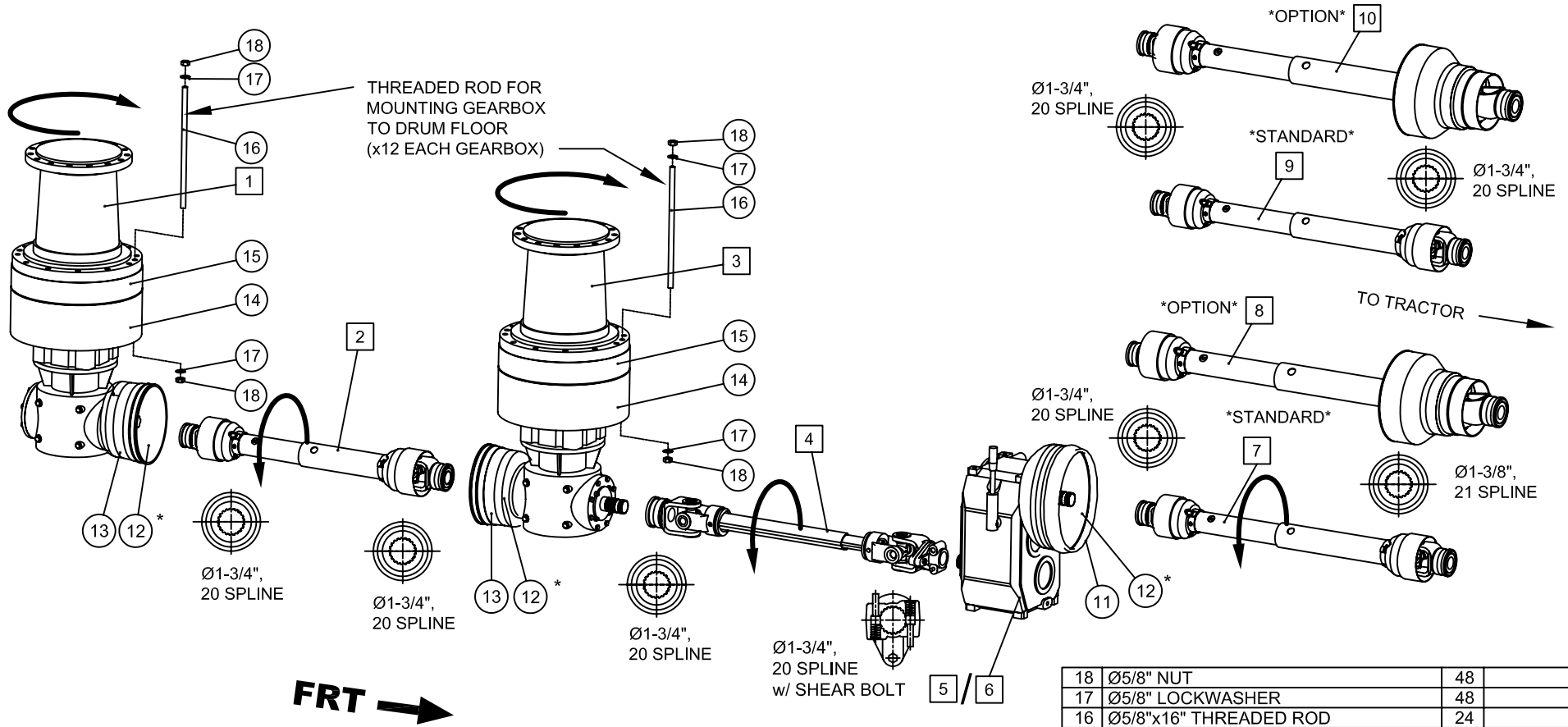
MODEL: 3750 TRAILER

DATE: JUNE 10, 2003 SHEET 1 of 1

PART/ASSEMBLY NO: 070-90-07







**FRT** →

**NOTES:**

- \* - PTO SHIELD MOUNTING HARDWARE CONSISTS OF (4) M8x16 BOLTS AND, (4)3/8" FLATWASHERS.
- ASSEMBLY #210-06-01 (ITEM 8) OR #210-06-02 (ITEM 10) OPTION EXTRA, DELETES ASSEMBLY #210-05-51 (ITEM 7) OR #210-05-55 (ITEM 9).
- PLEASE PROVIDE MACHINE SERIAL NUMBER TO ENSURE CORRECT REPLACEMENT PARTS.

18	Ø5/8" NUT	48	
17	Ø5/8" LOCKWASHER	48	
16	Ø5/8"x16" THREADED ROD	24	
15	SPACER RING (3")	2	019-00-51
14	SPACER RING (6")	2	019-00-50
13	PTO SAFETY SHIELD	2	070-00-89
12	MOUNTING HARDWARE	3	
11	PTO SAFETY SHIELD	1	070-00-88
10	#8 CV PTO SHAFT *OPTION*	1	210-06-02
9	#8 STD. PTO SHAFT	1	210-05-55
8	#8 CV PTO SHAFT *OPTION*	1	210-06-01
7	#8 STD. PTO SHAFT	1	210-05-51
6	AP502 2-SPEED TRANSMISSION	1	070-01-08
5	C3A 2-SPEED TRANSMISSION	1	070-45-01
4	#8 UNIVERSAL DRIVESHAFT	1	210-06-51
3	PG1802 BTI w/ T-269 GEARBOX (FRONT)	1	070-60-01
2	# 8 DRIVESHAFT ASSEMBLY w/ SHIELD	1	210-06-60
1	PG1802 BTI w/ T-269 GEARBOX REAR)	1	070-60-02
NO.	PART DESC.	QTY	PART NO.

**PARTS LIST**

MODEL:	3750, 3875, 31000 TRAILER	
DATE:	JUNE 10, 2003	SHEET 1 of 1
PART/ASSEMBLY NO:	070-90-08	



- ⊖ # - DENOTES INDIVIDUAL PART
- ⊞ # - DENOTES ASSEMBLY/SUB-ASSEMBLY

TITLE: STANDARD DRIVELINE ASSEMBLY (1000 RPM) FOR MODELS 3750/3875/31000 W/ C3A OR AP502 2-SPEED TRANSMISSION.